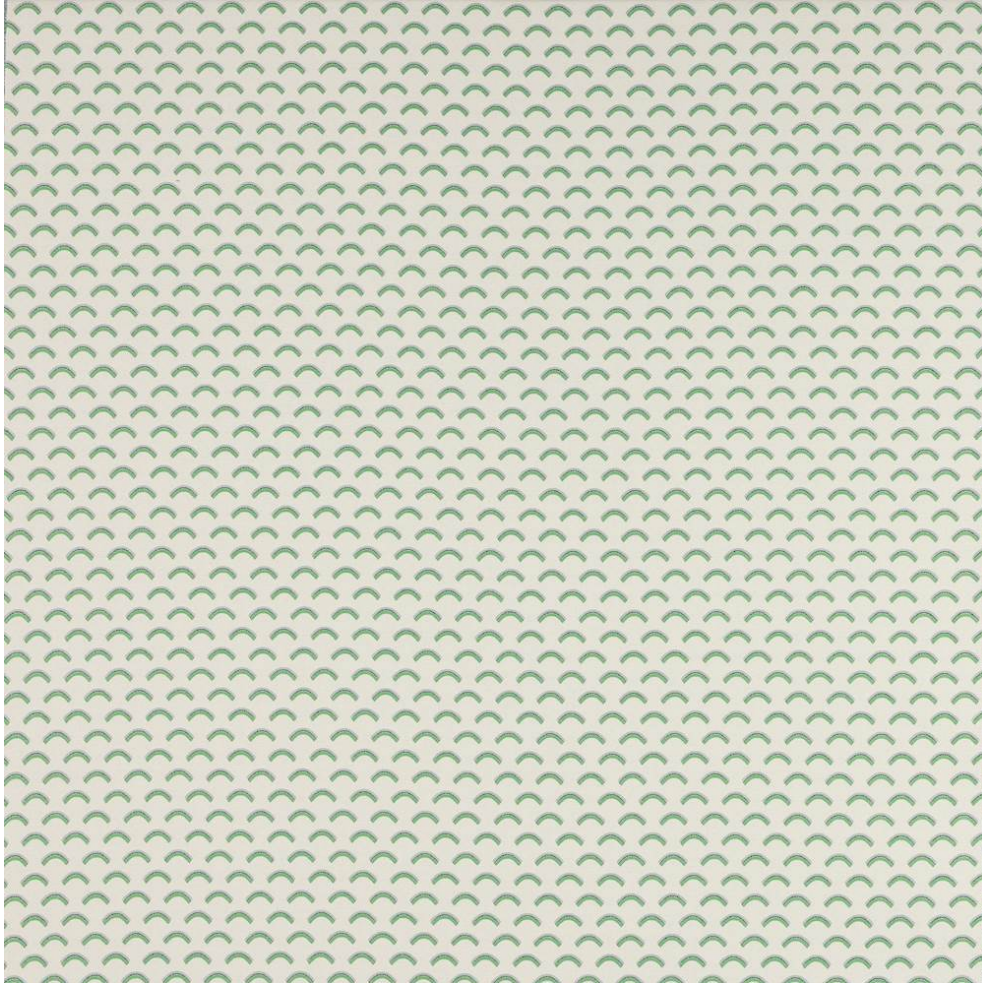


COWTAN & TOUT

COLEFAX AND FOWLER JANE CHURCHILL LARSEN MANUEL CANOVAS

TAMARIS



| | |
|--------------|---|
| Item Number | M4107-05 |
| Color | pomme |
| Composition | 87% Polypropylene 13% Polyester |
| Width | 56.75" |
| Repeat | Vertical :2.5" Horizontal :2.5" |
| Pattern Book | MC Saint-Tropez |
| Testing | Passes CTB117:2013, Martindale: 20,000, Colorfastness to li |
| Qualities | Indoor/Outdoor |