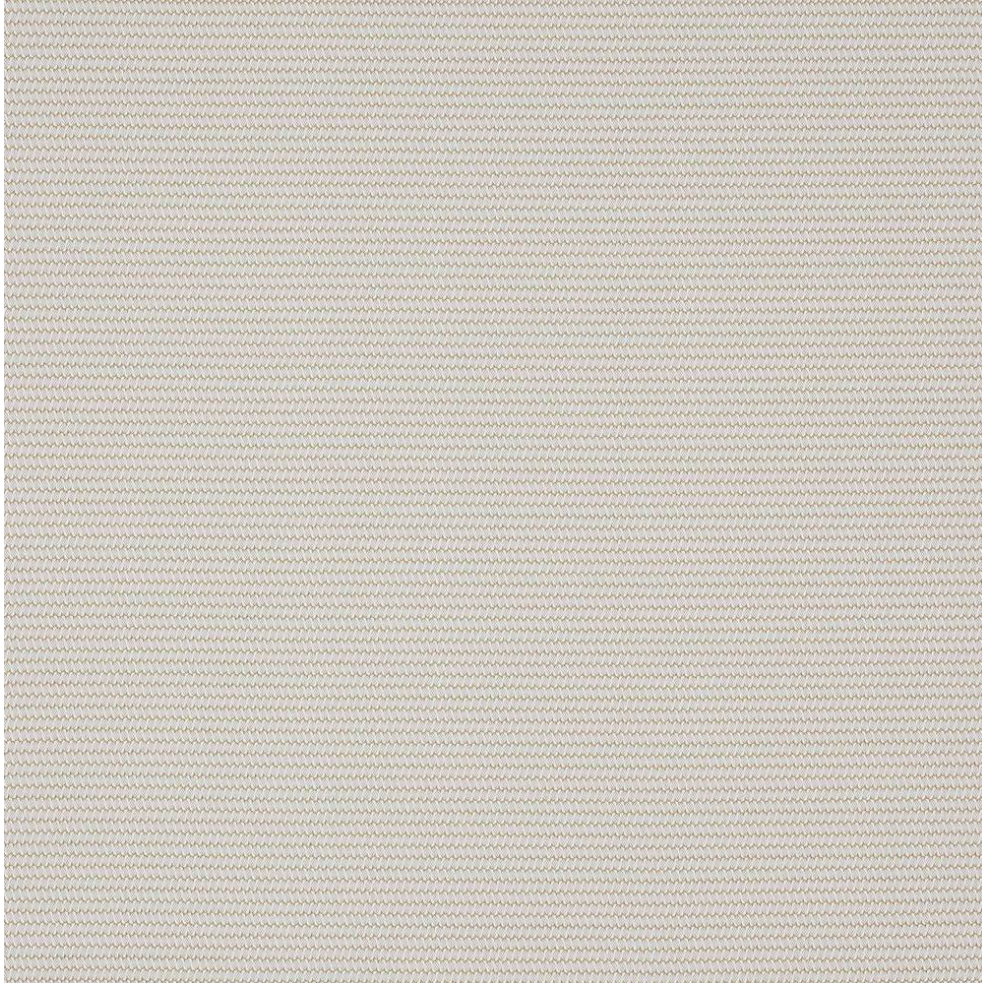


# COWTAN & TOUT

COLEFAX AND FOWLER JANE CHURCHILL LARSEN MANUEL CANOVAS

## CASSIS



Item Number	M4105-02
Color	lin
Composition	100% Polypropylene
Width	55"
Repeat	Vertical :0.75" Horizontal :0.25"
Pattern Book	MC Saint-Tropez
Testing	Passes CTB117:2013, Martindale: 40,000, Colorfastness to li
Qualities	Indoor/Outdoor