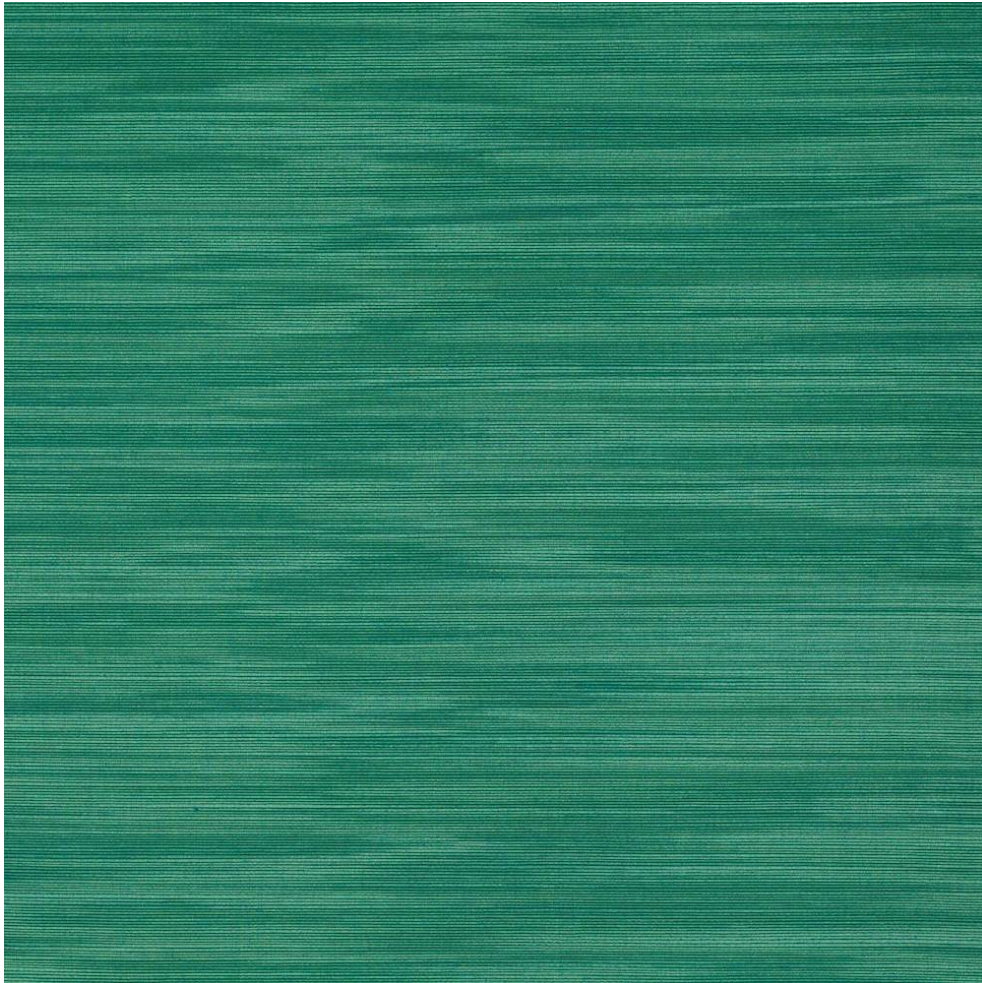


COWTAN & TOUT

COLEFAX AND FOWLER JANE CHURCHILL LARSEN MANUEL CANOVAS

IRIS



Item Number	M4084-25
Color	emeraude
Composition	80% Cotton 20% Polyester
Width	54.25"
Pattern Book	MC Iris
Testing	Passes CTB117:2013, Martindale: 17,000