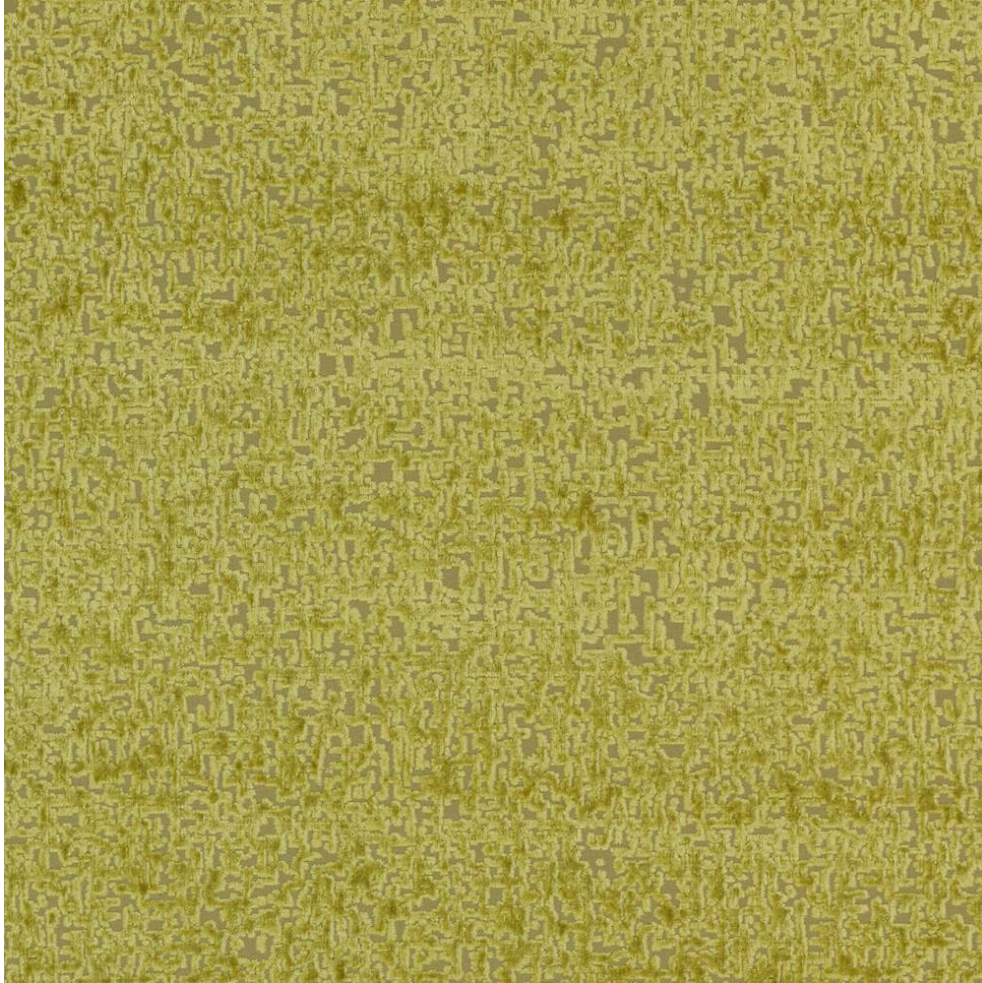


COWTAN & TOUT

COLEFAX AND FOWLER JANE CHURCHILL LARSEN MANUEL CANOVAS

EDWIN



Item Number	L9025-05
Color	anis green
Composition	51% Viscose 29% Cotton 20% Polyester Pile: 100% Viscose
Width	55"
Repeat	Vertical :29.5" Horizontal :13.75"
Pattern Book	Larsen Edwin
Testing	Wyzenbeek: 50,000, Martindale: 50,000
Qualities	Backing recommended, Finishing and cleaning may affect fab