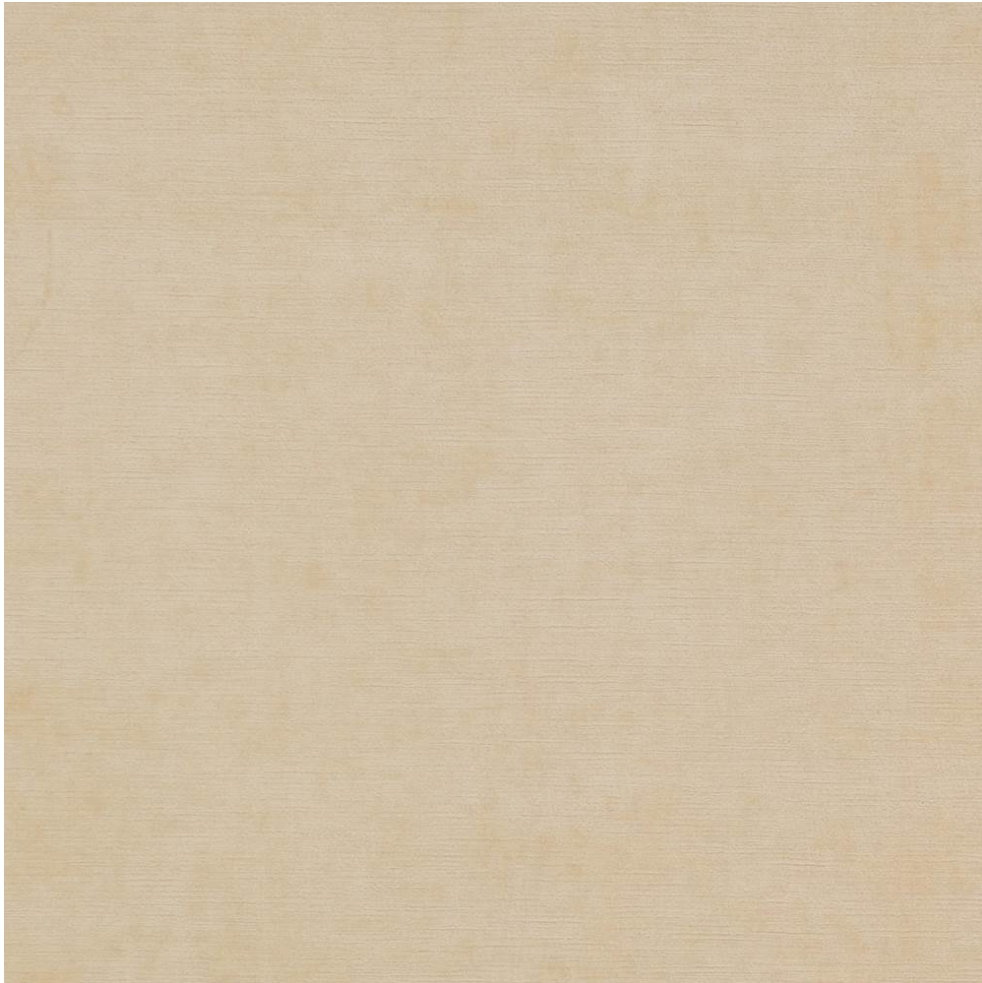


# COWTAN & TOUT

COLEFAX AND FOWLER JANE CHURCHILL LARSEN MANUEL CANOVAS

## BRADBURY



Item Number	L9021-01
Color	ivory
Composition	58% Viscose 34% Cotton 8% Polyester Pile: 100% Viscose
Width	55.5"
Pattern Book	Larsen Edwin
Testing	Wyzenbeek: 50,000, Martindale: 50,000
Qualities	Backing recommended, Finishing and cleaning may affect fab