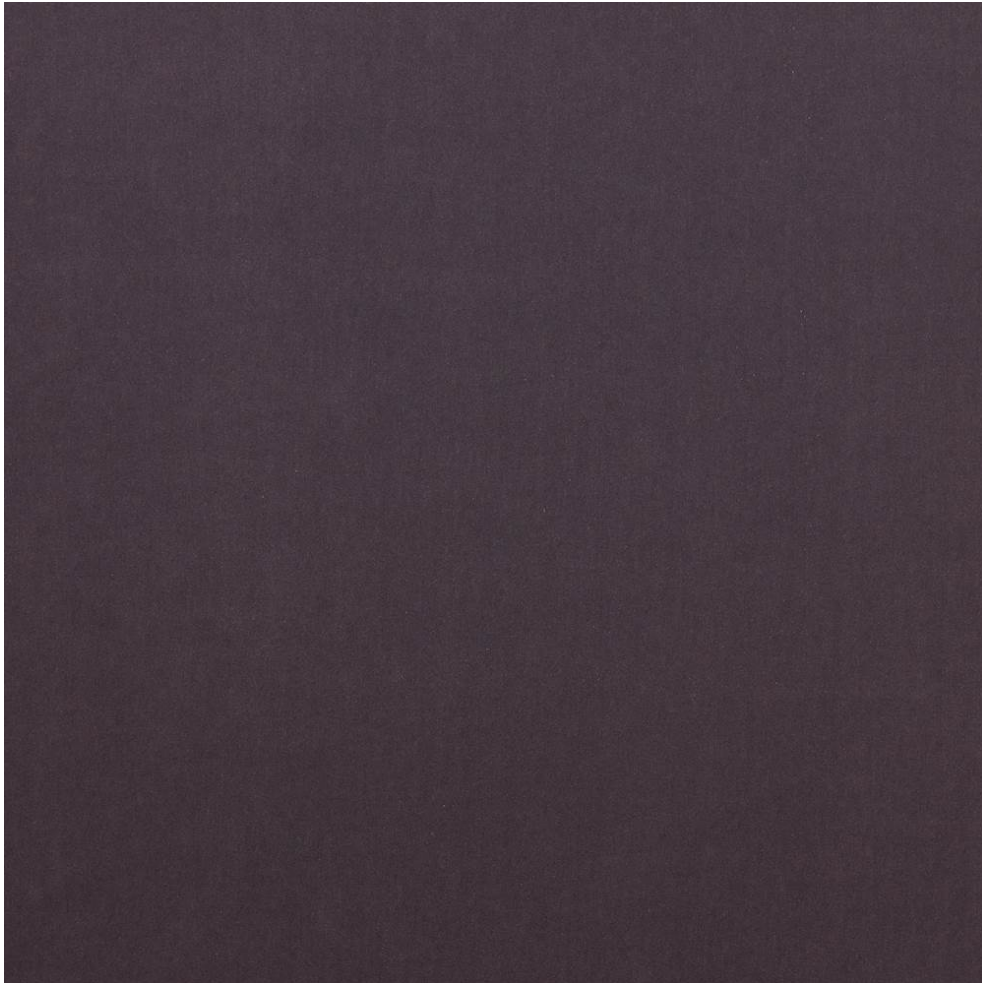


COWTAN & TOUT

COLEFAX AND FOWLER JANE CHURCHILL LARSEN MANUEL CANOVAS

EMILE



Item Number	J896F-11
Color	smoke
Composition	50% Cotton 50% Polyester Pile: 65% Poly 35% Cotton
Width	55"
Pattern Book	JC Emile
Testing	UFAC Class 1, NFPA 260 Class 1, Martindale: 50,000
Qualities	Finishing and cleaning may affect fabric, Washable