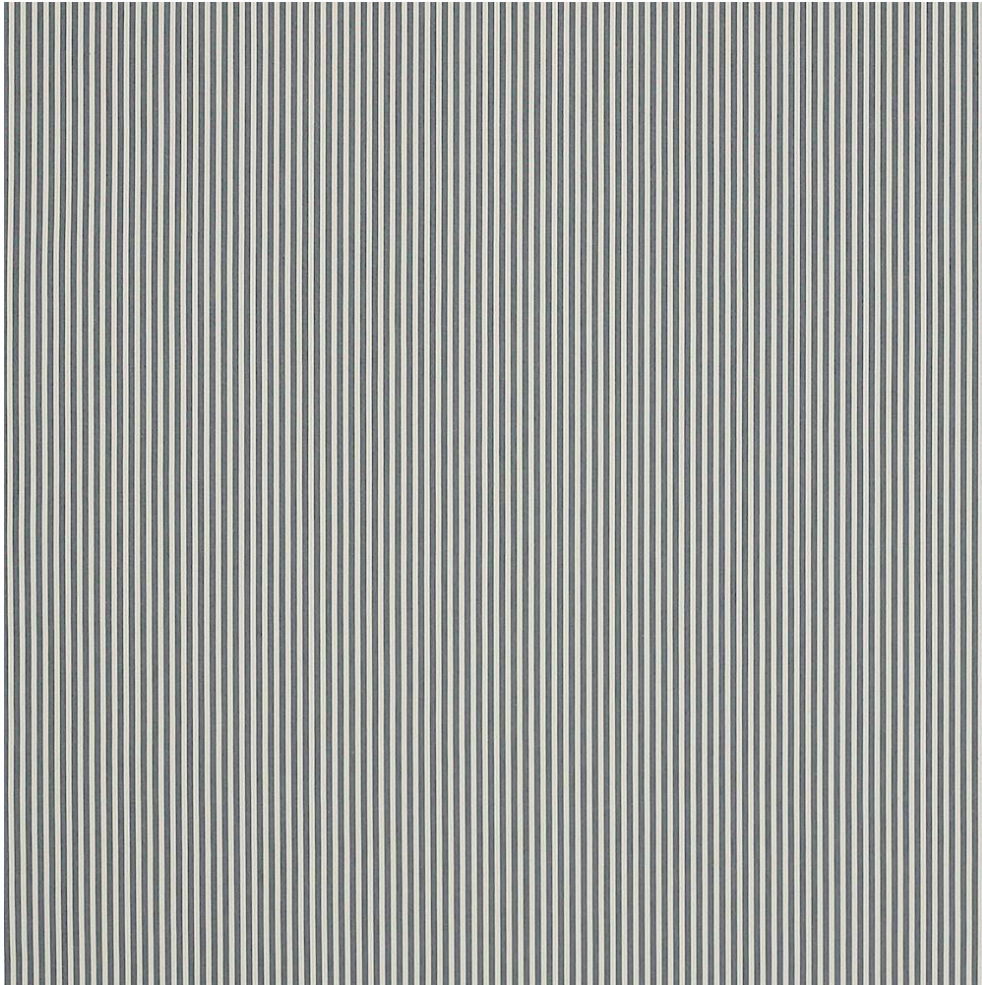


COWTAN & TOUT

COLEFAX AND FOWLER JANE CHURCHILL LARSEN MANUEL CANOVAS

ARLEY STRIPE



Item Number	J871F-10
Color	navy
Composition	100% Cotton
Width	54"
Repeat	Horizontal :0.5"
Pattern Book	JC Linhope
Testing	FR cloth required to pass CTB117:2013, Martindale: 48,000