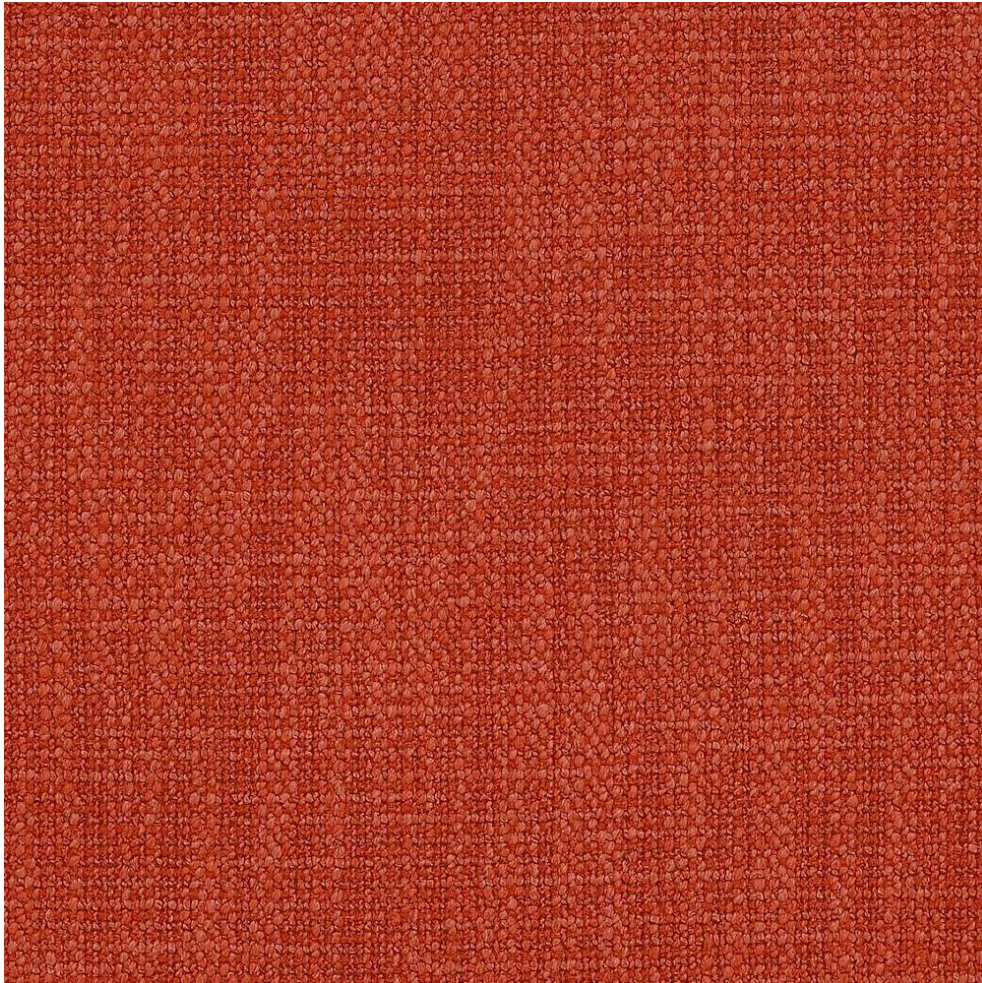


COWTAN & TOUT

COLEFAX AND FOWLER JANE CHURCHILL LARSEN MANUEL CANOVAS

SHELLEY



Item Number	J0115-14
Color	berry
Composition	64% Polyester 32% Viscose 4% Cotton
Width	54.25"
Pattern Book	JC Shelley
Testing	Passes CTB117:2013, Martindale: 30,000