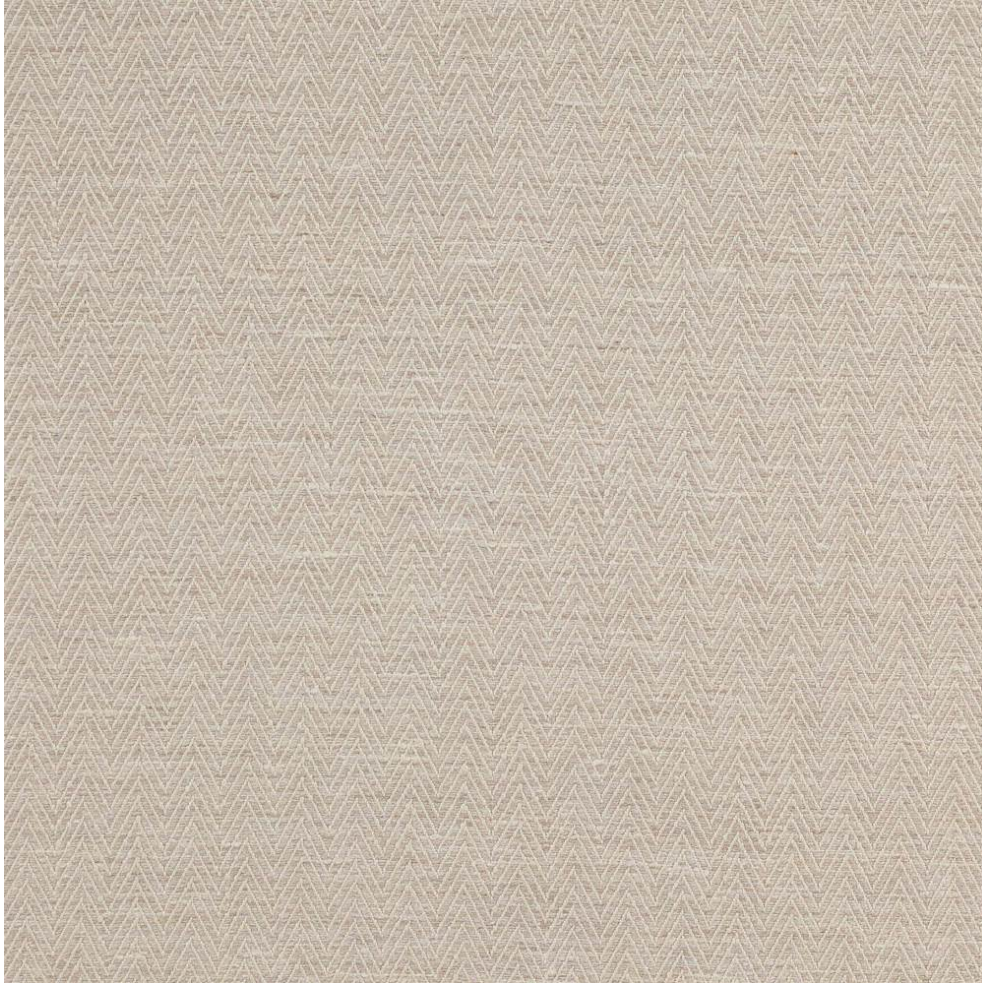


COWTAN & TOUT

COLEFAX AND FOWLER JANE CHURCHILL LARSEN MANUEL CANOVAS

KELSEA



Item Number	F4673-09
Color	shell pink
Composition	51% Linen 32% Viscose 9% Cotton 8% Polyester
Width	58"
Repeat	Horizontal :1.25"
Pattern Book	CF Kelsea
Testing	FR cloth required to pass CTB117:2013, Martindale: 30,000