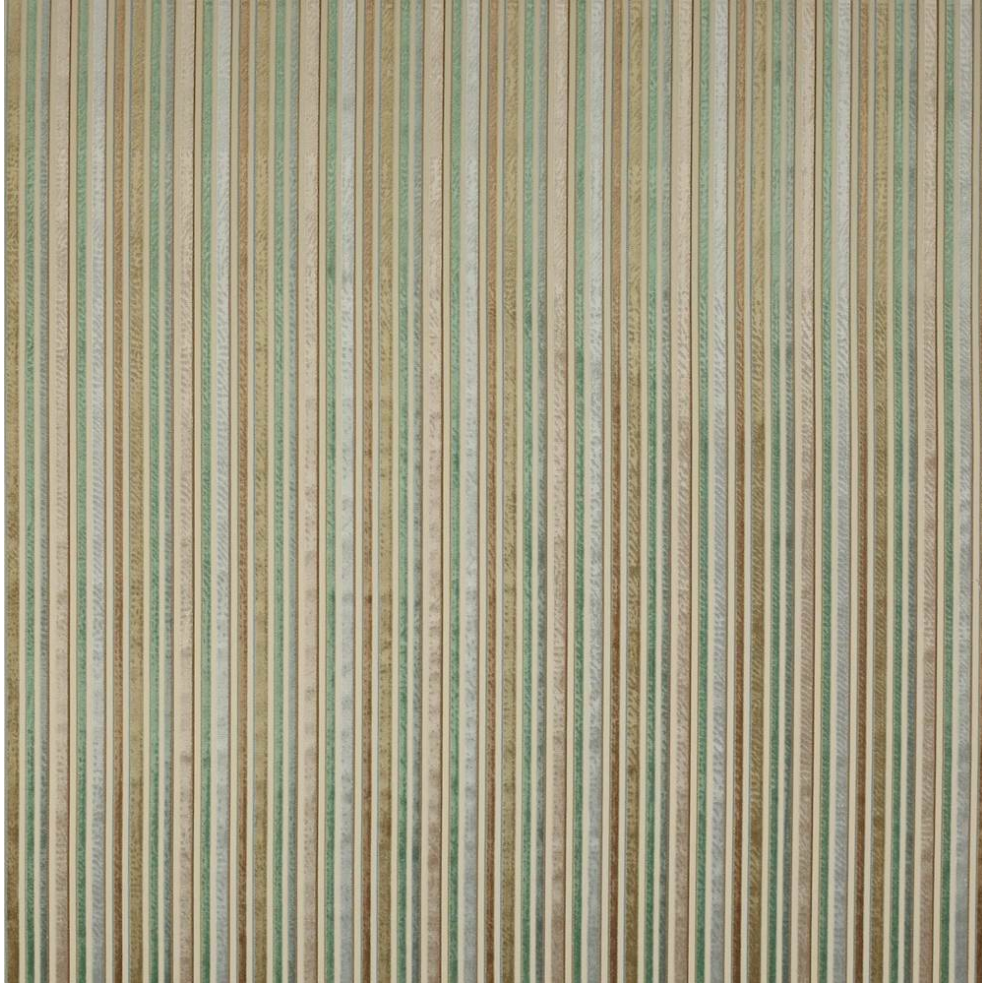


COWTAN & TOUT

COLEFAX AND FOWLER JANE CHURCHILL LARSEN MANUEL CANOVAS

HEMA



| | |
|--------------|---|
| Item Number | 4935-02 |
| Color | nattier |
| Composition | 57% Viscose 43% Cotton |
| | Pile: 100% Viscose |
| Width | 54" |
| Repeat | Horizontal :6.75" |
| Pattern Book | MC Amala |
| Testing | FR cloth required to pass CTB117:2013, Martindale: 50,000 |
| Qualities | Finishing and cleaning may affect fabric |