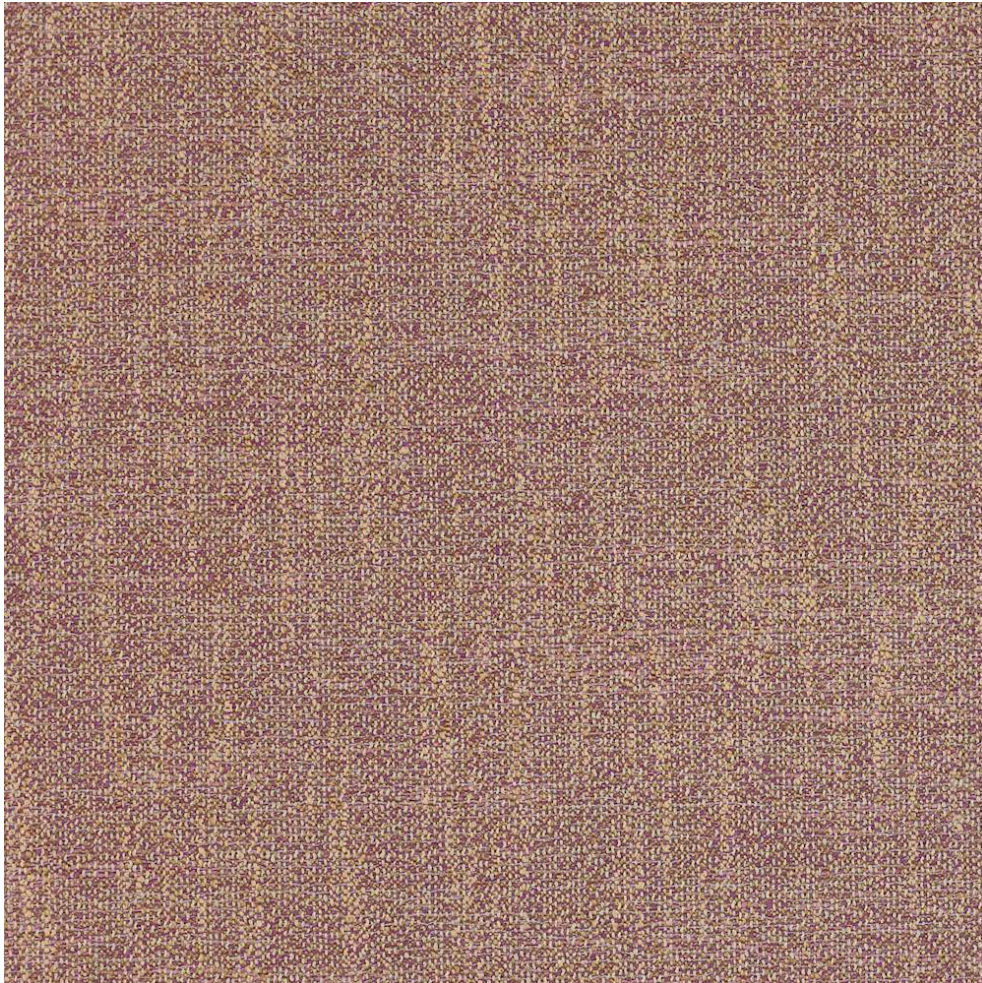


COWTAN & TOUT

COLEFAX AND FOWLER JANE CHURCHILL LARSEN MANUEL CANOVAS

RITA



Item Number	4933-13
Color	parme
Composition	30% Cotton 26% Viscose 21% Polyester 14% Acrylic 8% Linen 1% Polyamide
Width	56.25"
Pattern Book	MC Sarla
Testing	FR cloth required to pass CTB117:2013, Martindale: 50,000