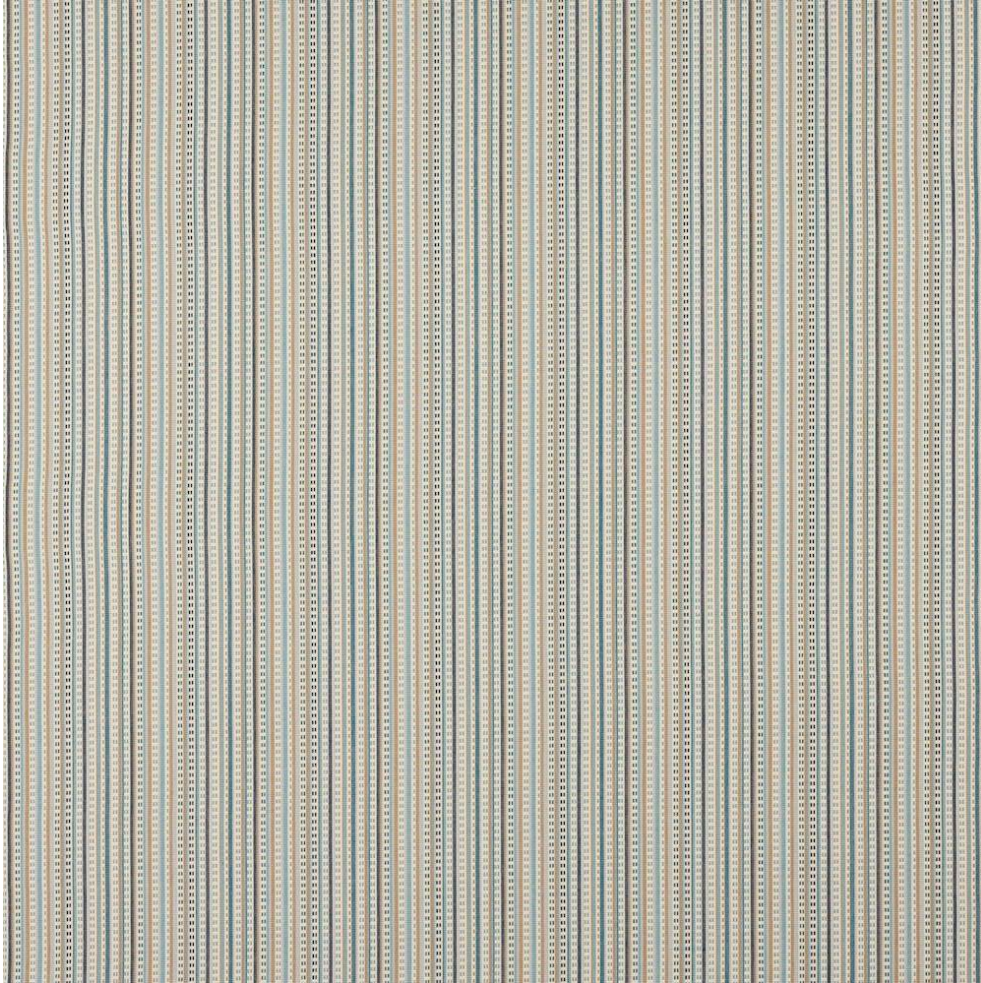


COWTAN & TOUT

COLEFAX AND FOWLER JANE CHURCHILL LARSEN MANUEL CANOVAS

CHELSEA STRIPE



Item Number	11670-02
Color	blue, indigo
Composition	100% Cotton
Width	55"
Repeat	Horizontal :7"
Pattern Book	CT Winter
Testing	FR cloth required to pass CTB117:2013